



Rock Grove
Brighton, BN2 1ND

FOSTER
& CO.

Rock Grove

Brighton, BN2 1ND

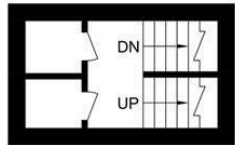
£3,000 Per month



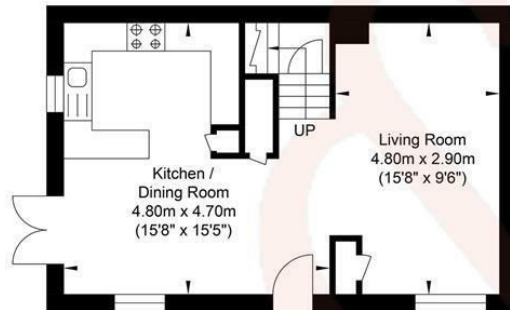
- Unfurnished
- 2 Bathrooms and w.c
- Access to Sussex Square Gardens
- Kitchen
- Close to the Hospital
- 4 Bedrooms
- South Facing Patio
- Living Room
- Close to Brighton College
- Available Mid August

Energy Efficiency Rating		
	Current	Potential
Very energy efficient - lower running costs		
(92 plus) A		
(81-91) B		
(69-80) C		
(55-68) D		
(39-54) E		
(21-38) F		
(1-20) G		
Not energy efficient - higher running costs		
	72	83
England & Wales		
EU Directive 2002/91/EC		

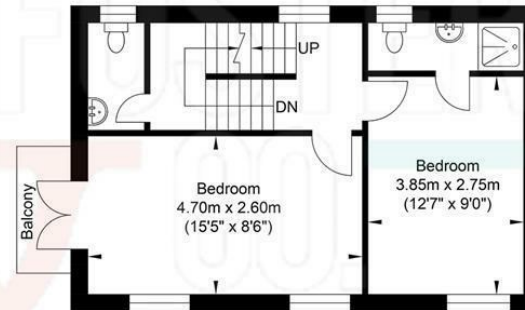
Rock Grove, Brighton



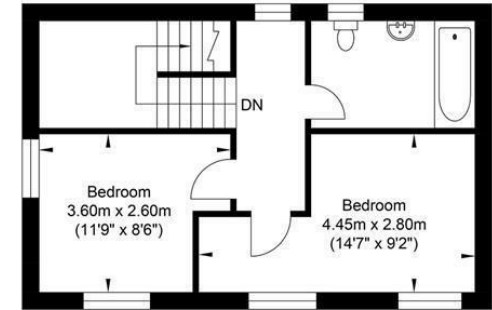
Lower Ground Floor
Approximate Floor Area
69.53 sq ft
(6.46 sq m)



Ground Floor
Approximate Floor Area
397.83 sq ft
(36.96 sq m)



First Floor
Approximate Floor Area
397.83 sq ft
(36.96 sq m)



Second Floor
Approximate Floor Area
397.83 sq ft
(36.96 sq m)



Approximate Gross Internal Area = 117.34 sq m / 1263.03 sq ft
Illustration for identification purposes only, measurements are approximate, not to scale.

